



# BURNING ISSUE

November 2019

GREATER SAINT LOUIS CHAPTER SOCIETY OF FIRE PROTECTION ENGINEERS

<http://www.sfpe-stl.org/>

## 2019-2020 Chapter Officers & Directors

### President

Steven Jones-Ahern Fire  
sjones3003@hotmail.com

### Vice President

Tim Ruiz - Code Consultants Inc.  
(314) 991-2633  
timr@codeconsultants.com

### Treasurer

Holly Olson – Code Consultants Inc.  
(314) 991-2633  
hollyo@codeconsultants.com

### Secretary

Elyse Carter - SSC Engineering  
(636) 530-7770 x162  
ecarter@sscengineering.com

### Immediate Past President

Mike Rositz – Code Consultants Inc.  
(314) 991-2633  
miker@codeconsultants.com

### Director

Micah Johnson-FM Global  
Micah.Johnson@fmglobal.com

### Director

Bill Kennedy  
wfkfm1@aol.com

### Director

Larry Wills  
lmwills@charter.net

### Newsletter Editor

Sheila DeMand – Aon  
sheila.demand@aon.com

### Scholarship Fund

Patrick Bastow - St. Louis Automatic Sprinkler Co.  
patrickbastow78@gmail.com

### Golf Outing Chairman

Larry Frank – Code Consultants Inc.  
larryf@codeconsultants.com

WHEN?	November 18, 2019
WHERE?	Syberg's On Dorsett 2430 Old Dorsett Road Maryland Heights, MO 63043
PROGRAM TOPIC	Case Study Report
SPEAKER	Steve Rinehart, AAS, BS, Asst. Chief, Training and Special Operations Maryland Heights Fire District
OFFICERS & DIRECTORS MTG	11:15 AM – 11:30 AM
REGISTRATION	11:30 AM – 12:00 PM
LUNCH	12:00 PM – 12:45 PM
PROGRAM	12:45 PM – 1:45 PM
BUSINESS MTG	1:45 PM – 2:00 PM
COST	\$18

### RESERVATIONS

Reservations must be called in or emailed to Sheila DeMand 314-624-9536/sheila.demand@aon.com and received prior to **12 PM Thursday, Nov 14**. Reservations made and not cancelled prior the closing for reservations will be billed to that member.

### SOCIETY OF FIRE PROTECTION ENGINEERS-*Greater St. Louis Chapter since May 14, 1961* EIN: 436061824

A not-for profit technical and professional organization, SFPE is the international clearinghouse for fire protection engineering information. The Society's goals are to advance the science and practice of fire protection engineering and its allied fields, to maintain high ethical standards among its members, and to foster fire protection engineering education.

## November Meeting

Our Speaker for the November Meeting will be Steve Rinehart, Assistant Chief-Training & Special Ops, Maryland Heights Fire Protection District. Steve will be presenting a Case Study Report.

## 2019 Golf Outing

Visit our website for Golf Outing Photos! It was a beautiful day!

<http://www.sfpe-stl.org/annualgolfouting.html>

Mark your calendars for next year, **Thursday Sept. 17 at the Falls**

## New SFPE Mailing Address

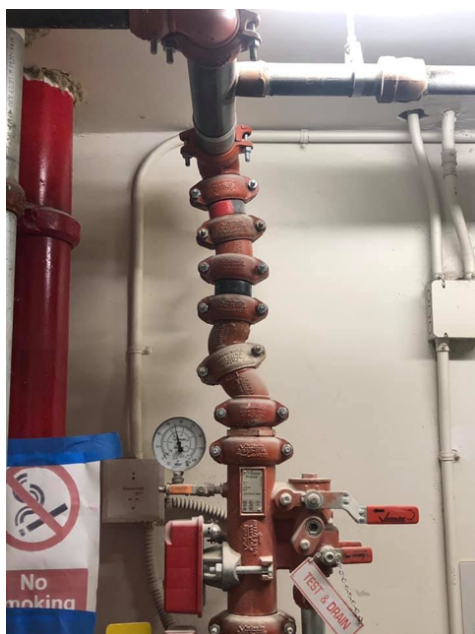
New mailing address as of 7/2019

SFPE  
St. Louis Chapter  
P.O. Box 28483  
St. Louis, MO 63146



**Ingenuity??**

Sent in by Steve Jones



## 2019/2020 Meeting Dates

<i>DATES</i>	<i>TOPIC</i>	<i>SPEAKER</i>
9/16/19	Codes and Standards that require Corrosion Mitigation and New Technology	Jeff Merwin, Potter Signal
10/21/19	Main reliefs, flow meter piping; FM changes to grid couplings; fire pump drives - VFD's; alarms and signals; diesel fire pumps and controllers; testing/pump curves	Nichole Fraley, Tigerflow Systems
11/18/19	A Case Study report	Steve Rinehart, Assistant Chief - Training & Special Operations, Maryland Heights Fire Protection District
1/20/20	TBD	
2/17/20	TBD	
3/16/20	TBD	
4/20/20	TBD	
5/18/20	TBD	

## SFPE Student Chapter

We are actively pursuing starting a student chapter of SFPE at Missouri University of Science & Technology (MS&T). National has approved the student chapter and the organizers are awaiting the final approvals of the University before the chapter is official. Thank you to Larry Frank and Erin Crowley for working hard to get this chapter up and running!

## SFPE STL Website Link

<http://www.sfpe-stl.org/>

## PDH Certificates

We will be providing a certificate that states the date, title of the presentation, and speaker name along with 1 hour of PDH for every meeting attended. Certificates will be available after the presentations.

## ***In the NEWS***

---

### **Request for Articles**

We are always looking for informative articles to share with our members. If you have authored an article or find one you believe would be of interest, please send it to me at [sheila.demand@aon.com](mailto:sheila.demand@aon.com)

### **SFPE Portfolios Available**

SFPE St. Louis leather portfolios are available to members for \$15. The portfolio includes a calculator, pockets and a pad of 8.5 x 11 in. ruled paper. Anyone interested in purchasing a portfolio, let Steve Jones know at a meeting. (or at [sjones3003@hotmail.com](mailto:sjones3003@hotmail.com))